



6Beds

Advocating for Safe & Affordable
Quality Residential Care

MARCH 2022

THE VOICE

THIS ISSUE:

02 COVID-19
UPDATES

7 CARETALK:
FIRST TO KNOW
FIRST TO GROW

11 6BEDS 8TH ANNUAL
ADVOCACY DAY

25 LEGISLATIVE
UPDATES

30 PINs UPDATE

32 RATE STUDY
IMPLEMENTATI
ON

37 6BEDS VENDORS

ABOUT US

6Beds, Inc. promotes safe and affordable quality care for California seniors and adults with disabilities in a home-like environment.

6Beds is committed to educating and advocating on behalf of California's vulnerable residents by uniting senior and adult care facilities throughout the state.

6Beds is the voice and represents the concerns of the small care providers.

COVID-19 UPDATES

Updated March 31, 2022, with data from March 30, 2022.

CASES

8,487,070

total

1,959 daily avg.

5 new cases per
100K

DEATHS

88,043

total

48 daily avg.

0.1 new deaths per
100k

TESTS

**1.3% test
positivity**

VACCINES ADMINISTERED

72,725,111

total

24,967 daily avg.

83.8% of population vaccinated

Note: Data on cases, deaths, and testing is not reported on weekends or state holidays. This data is reported on the first day following the weekend or holiday. Data on administered vaccines is reported daily. Case rate is based on a 7-day average with a 7-day lag. Rates of deaths is based on a 7-day average with a 21-day lag due to delays in reporting. Test positivity is based on a 7-day average with no lag. Directional change is compared to the prior 7-day period. Data is provided by the California Department of Public Health. The population denominators used for the per 100K rates come from the California Department of Finance's population projections for 2020.

Sources : <https://covid19.ca.gov/>

MORE CONTAGIOUS VARIANT OF OMICRON IS SPREADING, CAUSING CONCERN

A more severe kind of the virus that might threaten the country's efforts to return to normal is being closely monitored by infectious disease experts.

BA.2 is an omicron strain that spreads more easily - by roughly 30%.

Because BA.2 quickly outperformed the original omicron in South Africa and other countries, experts expect a repeat performance in the US.

"A lot of us were assuming that it was going to quickly take off in the United States just like it was doing in Europe and become the new dominant variant," says Nathan Grubaugh, an epidemiology associate professor at Yale School of Public Health.

That hasn't happened yet. Rather, BA.2 spread slowly as the omicron spike receded. The worry is that spread will pick up speed soon.

According to experts, BA.2 is unlikely to cause a large new outbreak due to broad immunity from previous infections and immunization

Omicron infects about 100,000 individuals each day and kills 2,000. Even if BA.2 does not appear to make people sicker than the original omicron, it may result in more severe illness and death.

According to recent study, one of the remaining COVID-19 antibody treatments may be less effective against BA.2.

"There are going to be plenty of people getting sick and ending up on respirators and dying because of BA.2," says Dr. Jeremy Luban, a virologist at the University of Massachusetts Medical School.

Although vaccination and earlier infection appear to protect against BA.2, this virus appears to outwit the immune system more than the original omicron. This raises worries about a possible increase in new occurrences.

Even more so if this occurs at a time when mask mandates and other restrictions are being dropped across the country and people are truly letting their guard down.



WHAT CAN WE DO TO STOP THE SPREAD OF THE OMICRON VARIANT?

Just like the previous variants that we are aware of, the best tool to protect ourselves from getting infected and to prevent the spread is to:

1 GET VACCINATED/ GET BOOSTER SHOTS



COVID-19 vaccines are proven to be highly effective at preventing severe illness, hospitalizations and death. Scientists are currently evaluating the efficacy of these vaccines but highly encourage people to get their vaccines to do their part to help fight this battle.

3 AVOID TOUCHING YOUR EYES, NOSE AND MOUTH



There may be a possibility that you contracted the virus after coming into contact with a contaminated surface. If you often touch your nose, eyes, or lips, you may unintentionally spread the infection.

2 WEAR MASKS WHEN YOU ARE IN PUBLIC INDOOR SETTINGS REGARDLESS OF YOUR VACCINATION STATUS.



One of the most important safety protocols we should practice. Wearing masks can prevent the spread of the virus from person to person. CDC provides advice about masks on what type of mask to wear depending on circumstances.

Read here:

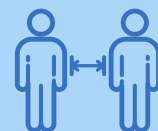
<https://www.cdc.gov/coronavirus/2019-ncov/prevent-getting-sick/about-face-coverings.html>

4 SANITIZE



Maintain hygiene and follow the prevention tips including disinfection and sanitization to reduce the chances of contracting the COVID-19 virus.

5 MAINTAIN SOCIAL DISTANCING



Keep a minimum of 3-6 feet between you and other individuals. This is because the COVID-19 virus can be sprayed into the air by an infected individual through micro droplets produced when coughing or sneezing. There is a very high risk of infection if you breathe this air.

REQUIREMENTS FOR VISITING ADULT AND SENIOR CARE RESIDENTIAL FACILITIES

Planning to visit an adult or senior residential care facility?

Visiting a care facility? You must be fully vaccinated/boosted OR show a negative COVID-19 test

- Visitors must provide proof of vaccination or provide evidence of a negative covid-19 test (taken within one day of visitation for antigen tests, or within two days of visitation for PCR tests) OR permit only outdoor visitation for those that do not meet all the requirements.

The following exceptions may be made (but only for a period of 72 hours):

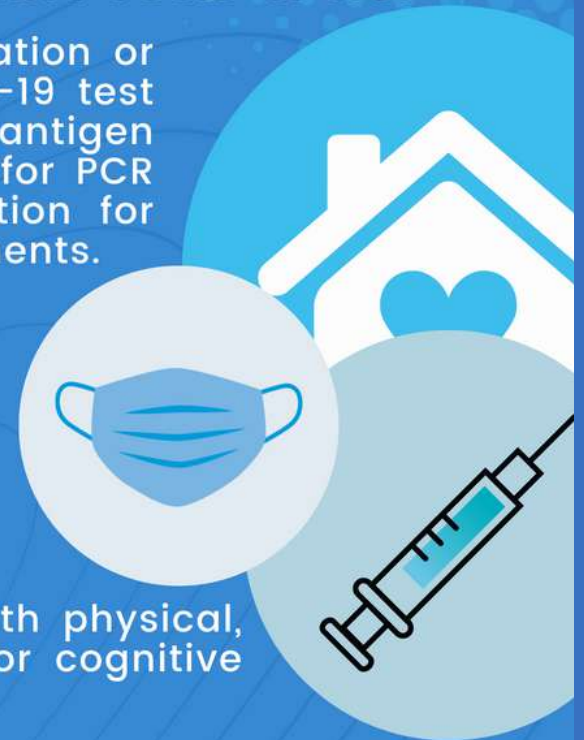
- Visitors who are visiting a patient in critical condition, when death may be imminent.
- For a support person for a patient with physical, intellectual, developmental disability or cognitive impairment
- Visitors must comply with the vaccine verification or applicable testing requirements.

Visiting an adult or senior residential care facility? You must be fully vaccinated/boosted AND show a negative COVID-19 test

- Individuals visiting residents in adult or senior residential care facilities indoors must provide BOTH proof of full vaccination/booster status AND evidence of a negative SARS-CoV-2 test (taken within one day of visitation for antigen tests, and within two days of visitation for PCR tests)
- Anyone visiting residents adult or senior residential care facilities outdoors only must show a negative test.

ALL VISITORS, for any of the above settings, must wear a face covering and practice physical distancing at all times.

- All visitors to any of the above settings must wear a well-fitting face mask at all times at the facility (a surgical mask, double masking or a respirator is recommended).
- All visitors must also physically distance from other patients/residents/visitors that are not part of their group at all times



FREE FLYER FOR 6BEDS MEMBERS

NEW VISITATION RULES

Effective on January 7, 2022 - February 7, 2022

State Public Health Officer Order from California Department of Public Health (CDPH)

You are welcome to visit indoors if you have the following:

- 1. Provide BOTH proof of full vaccination with booster status AND evidence of a negative COVID-19 test (taken 1 day (24 hours) of visitation for antigen tests, or 2 days (48 hours) of visitation for PCR tests).**
- 2. Wear a well-fitting mask with good filtration (N95, KF94, KN95, or Surgical masks are preferred over cloth masks).**

Guidelines are in place to help protect our vulnerable residents and facility staff. Kindly let us know if we can arrange a virtual visit via Zoom or Facetime, phone calls are also available upon request.

Thank you for understanding.

If you are interested to know more about exemptions for the following visitation requirements, you may contact us.

CONTACT US



CAREtoTALK

CAREtoTALK: First to Know, First to Grow

DISCLAIMER:

The information provided by 6Beds, Inc. ("we, "us", "our") for our CAREtoTALK Webinars are for general information purposes only. The views and opinions expressed by 6Beds, our company have been provided in good faith, however we make no representations or warranty of any kind, express or implied, regarding the accuracy, adequacy, validity, reliability, availability or completeness of any information that will be discussed on our CAREtoTALK Webinars. UNDER NO CIRCUMSTANCE SHALL WE HAVE ANY LIABILITY TO YOU AND YOUR COMPANY FOR ANY LOSS OR DAMAGE OF ANY KIND INCURRED AS A RESULT OF THE USE OF 6BEDS ON ANY INFORMATION PROVIDED ON THIS MEMBER EXCLUSIVE WEBINAR. YOUR USE OF THE INFORMATION IS SOLELY AT YOUR OWN RISK.

CAREtoTALK

January 19, 2022

GINA WASDYKE



CAREtoTALK: New Visitation Regulations / Petition Caregivers huge discount for 6Beds PPM

January's CAREtoTALK included a presentation by 6Beds Vendor S3C Solar Inc presented by Alex Alino on the benefits of going solar, information on the new visitation regulation to limit the risk of COVID-19 infection within your facility and caregiver petition cost huge discounts for 6Beds PPM recap shared by Gina Wasdyke.

On-Demand webinar resources for January 19, 2022

(Clickable links)

- [January 19, 2022 CAREtoTALK Webinar Recording](#)
 - [New Visitation Regulation and Caregiver Petition Cost \(Slide Deck\)](#)
 - [S3C Solar Slide Deck by Alex Alino](#)
 - [Visitation Requirements Flyer](#)

CAREtoTALK

February 23, 2022

CAREtoTALK: How to Petition Caregivers who are already in the US, currently on another visa

February's CAREtoTALK included a "Featured Vendor of the Month", 6Beds Vendor Life Hospice, a recap of "How to Petition Caregivers", estimated cost and timeline and "How to Petition Caregivers who are currently in the US, but on a different visa" presented by our special guest speaker, top immigration lawyer, Atty. Carmen Villamor of GreenDoor Placement.

On-Demand webinar resources for February 23, 2022

(Clickable links)

- [February 23, 2022 CAREtoTALK Webinar Recording](#)
 - [6Beds: Steps on How to Apply for Joint RFA \(Slide Deck\)](#)
 - [Petition Caregivers \(Slide Deck\)](#)

ATTY. CARMEN VILLAMOR



**GET HUGE DISCOUNTS ON
YOUR PETITION AS PART
OF 6BEDS PPM BENEFIT!**



GreenDoor Placement LLC

+1 323 236 2066

info@greendoorplacement.com

greendoorplacement.com

CAREtoTALK

March 16, 2022

CAREtoTALK: Key Thing You Need to Know to Apply for BHCIP and CCE Launch Ready Program

March CAREtoTALK webinar series, presented by our guest speaker, Patrick Prado, HomeCA Contracts Manager shared the key things you need to know to apply for Behavioral Health Continuum Infrastructure Program (BHCIP) and Community Care Expansion (CCE) Launch Ready and Expansion Grants! In this CAREtoTALK webinar, learn more about the process and timeline on BHCIP and CCE Program Joint RFA Application.

On-Demand webinar resources for February 23, 2022

(Clickable links)

- [March 16, 2022 CAREtoTALK Webinar Recording](#)
 - [HomeCA: BHCIP and CCE \(Slide Deck\)](#)



650-438-2861



patrickprado1@homeca.org



HomeCA.org

PATRICK PRADO



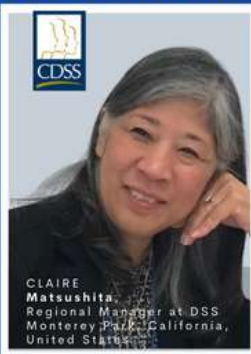
APRIL 19, 2022

6BEDS 8TH ANNUAL ADVOCACY DAY

6Beds 2022 ARF & RCFE 8TH ANNUAL ADVOCACY DAY



KEVIN
Gaines,
Community Care Licensing
Division (CCLD), Deputy
Director



CLAIRE
Matsushita,
Regional Manager at DSS,
Monterey Park, California,
United States



JIM
Patterson,
Assembly member (R) Fresno
and Tulare



SCOTT
Wiener,
Senator 11th District



NANCY
Bargmann,
California Department of
Developmental Services (DDS)



JOHN
Decker,
Alta California Regional
Center,
Community Services and
Supports Director

APRIL 19, 2022

9 AM - 1 PM
Via Zoom Webinar



6Beds 2022 ARF & RCFE 8TH ANNUAL ADVOCACY DAY

FREE Conference for ARF and RCFE Operators • FREE Conference for ARF and RCFE Operators

We are inviting you to our biggest event, you surely do not want to miss! **6Beds is having their 8th Annual Advocacy Day via zoom on April 19, 2022 from 9:00 AM - 1:00 PM.** Join us as we celebrate another milestone at 6Beds, together with our key speakers California Department of Social Services (CDSS) and ALTA California Regional Center and many more. [Click here to register](#)



6Beds

Advocating for Safe & Affordable
Quality Residential Care

via

zoom

ATTENTION TO ALL LICENSEES IN SACRAMENTO

California recently updated its Visitation Guidance and required testing before both indoor and outdoor visitation in licensed residential Adult and Senior Care facilities. With the recent COVID surge, test have become harder to obtain.

The state has announced that they will be distributing more than 800,000 iHealth at-home antigen test to licensed residential Adult and Senior Care facilities throughout the state to help facilitate visitation. Each licensed residential facility will receive 3 tests for each licensed bed.

Details of distribution plan for the county where your facility is located.

County: Sacramento

Location: Alta California Regional Center located at 2241 Harvard St. Sacramento CA 95815

Date: February 12, 2022

Time: 10:00 AM-1:00 PM & 1:00 PM-3:00 PM

Special Instructions:

- Please bring a copy of your facility license to verify the licensed capacity
- Each licensee may only collect tests once during this event



6Beds

Advocating for Safe & Affordable
Quality Residential Care

PIN 22-06-ASC-CORONAVIRUS DISEASE 2019 (COVID-19) VACCINE ADDITIONAL AND BOOSTER DOSES

The Community Care Licensing Division (CCLD) of the California Department of Social Services (CDSS) would like to make all ASC licensees aware about the revised COVID-19 vaccination and booster doses recommendations.

The Centers for Disease Control and Prevention (CDC) reports that research shows immunization effectiveness against sickness decreases over time. Optimal immunity is crucial, especially for the elderly, disabled, and long-term care residents who are more susceptible to dangerous infections. Covid-19 cases in the community and ASC residential institutions may indicate diminishing immunity, underlining the necessity for COVID-19 vaccine boosters in this population. The recent Omicron variant highlights the importance of immunization and boosters.

Third (additional) and Booster Dose Recommendations For Individuals With Moderately To Severely Compromised Immune Systems

Immunocompromised individuals may not get the same level of immunity to two-dose mRNA vaccines as non-immunocompromised individuals. The CDC advises those with mild to severe immunological impairment to get a third (extra dose) of Pfizer-BioNTech or Moderna vaccines at least 28 days after finishing their initial series.

Note: Priority groups for vaccine booster doses are people 50 years and older, and people 18 years and older who live in long-term care settings, which includes all residents of ASC facilities.

Read more: [PIN 22-06-ASC](#)

WHO IS ELIGIBLE FOR A VACCINE BOOSTER DOSE?

Vaccine recipients are eligible for single-dose boosters as outline below



Pfizer-BioNTech

If the individual is:

- Age 12 years and older, and
- received a second dose at least five (5) months ago



*Must be at least six (6) months after receiving their primary vaccination

Moderna

If the individual is:

- Age 18 years and older, and
- received a second dose at least five (5) months ago



Janssen (Johnson and Johnson)

If the individual is:

- Age 18 years and older, and
- received a second dose at least five (5) months ago

Vaccinated Outside the United States**

If the individual is:

- Age 18 years and older, and
- received a second dose at least five (5) months ago

**Applies to people who completed all of the recommended doses of World Health Organization Emergency Use Listed (WHO-EUL) COVID-19 vaccine not approved or authorized by FDA or people who completed a heterologous (mix and match) series composed of any combination of FDA-approved, FDA-authorized, or WHO-EUL COVID-19 vaccines.

VACCINE BOOSTER DOSE (MIX & MATCH)

Note: With flu season underway, CCLD would like to remind licensees that it is also critical for individuals in care and facility staff to acquire a flu vaccine. Individuals can receive a flu vaccine together with a COVID-19 first dose of vaccine or a COVID-19 booster shot, a second dose is advised for immunocompromised patients since the first vaccine series may not provide sufficient protection and a second dose can increase antibody response.

PRIMARY VACCINE



***Must be at least two (2) months after receiving their primary vaccination**

moderna

***Must be at least six (6) months after receiving their primary vaccination**



***Must be at least six (6) months after receiving their primary vaccination**

ELIGIBLE BOOSTER

moderna

janssen
PHARMACEUTICAL COMPANIES
OF Johnson & Johnson

Pfizer



PIN 22-07-ASC UPDATED STATEWIDE VISITATION WAIVER, AND TESTING AND VACCINATION VERIFICATION GUIDANCE FOR VISITORS

Resident's rights to visitation are waived and indoor visitation shall be permitted only in accordance with this waiver. Visitation shall also be limited or modified. Unless otherwise noted, all visitors, including support persons, are subject to visitation restrictions.

During the time when regular visitation is limited, facilities must create other arrangements (such as Virtual Visitation and Outdoor Visitation)

General Visitation Requirements for Licensees

For any visitor entering the facility, regardless of their vaccination status, licensees must:

- Designate a facility staff to conduct initial screening for COVID-19 symptoms of all individuals entering the facility.
- Require visitors to be screened for fever and COVID-19 symptoms, wear a well-fitting face mask
- Exclude visitors showing COVID-19 symptoms

Read more: [PIN 22-07-ASC](#)

Virtual Visitation

Arrange for alternative communication for visitors such as phone calls, video calls, and online communications. As of January 1, 2022, licensees that have internet access must provide at least one internet accessible device.

Outdoor Visitation

Outdoor visits pose a lower risk of transmission due to increased space and airflow; therefore, any outdoor visitation is preferred.



PIN 22-09-ASC UPDATED GUIDANCE ON QUARANTINE AND ISOLATION FOR FACILITY STAFF EXPOSED TO COVID-19 AND RETURN TO WORK FOR FACILITY STAFF WHO TEST POSITIVE FOR CORONAVIRUS DISEASE 2019

Omicron variant COVID-19 cases have increased in recent months, prompting the California Department of Public Health (CDPH) to revise its isolation and quarantine protocols to better reflect current understanding of infection and exposure.

Based on guidance from the Centers for Disease Control and Prevention (CDC) and the California Department of Public Health (CDPH), the CDSS has recommended the following work restrictions and negative test criteria.

Note: As stated in PIN 21-23-ASC, licensees may implement additional protective measures and prior guidance, as well as longer (10-day) isolation periods for infected facility staff or longer (10-day) quarantine periods for exposed facility staff.

Workplaces where (1) individuals receive care or (2) persons receiving care have access for any purpose, and who are not otherwise exempt from this requirement, must:

1. Have the first dose of a one-dose regimen or the second dose of a two-dose regimen by November 30, 2021; or
2. Be fully vaccinated and receive the booster dose for COVID-19 by March 1, 2022, if eligible. If a booster dose is recommended but a worker has not yet met the eligibility requirements, they must comply within 15 days of the recommended timeframe.

ISOLATION, QUARANTINE AND WORK RESTRICTION FOR FACILITY STAFF

Quarantine: People who have been in close contact with someone who has COVID-19 are quarantined to prevent the spread of the disease.

You may access the table guide work restrictions for asymptomatic staff with COVID-19 infection and for asymptomatic staff with exposures based upon staff vaccination status and facility staffing level here: [Work Restrictions for Staff with COVID-19 Infection \(Isolation\)](#)

BHCIP and CCE Launch Ready Program

Get Assistance:

For all BHCIP and CCE Launch Ready Programs Application Assistance and related questions to Deanna Pineda of HomeCA, Inc.

HomeCA – Providing Safe & Affordable Permanent Housing and Services for Californians Who are Chronically Homeless or at Risk of Homelessness.



1-855-466-3978



DPineda@homeca.org



homeca.org

DEANNA PINEDA



BOARD OF DIRECTORS



Gina Wasdyke, MBA

Founder & Director

Communication, Membership & Operations Director



Ronald Simpson, MBA, PhD

Compliance & Clinical Director

6Beds President (Southern California)



Bruce Winstead, Esq.

Director



George Kutnerian, MS, MBA

Legislative Director

Senior Vice President of Public Policy
& Legislation



Cyndy Minnery, RN, BSN

Education Director

Senior Vice President of Clinical Affairs &
Compliance

OFFICERS



Ronald Simpson,
MBA, PhD
SoCal President
RCFE Operator



Dorie Paniza
NorCal President
RCFE Operator



Angie Marinda
Secretary/
Treasurer
RCFE Operator



Ines Otbo
Vice President
RCFE Operator

LOBBYISTS



Robert Naylor



Roxanne Gould

PIN 22-01-ASC UPDATE REGARDING THE EMERGENCY AND DISASTER PLAN FORM (LIC 610D) FOR ADULT COMMUNITY CARE FACILITIES



The updated form will provide a comprehensive template to aid in developing an emergency and disaster plan. All adult senior care facilities must update and review their disaster emergency plans annually and make changes whenever necessary. This is highly critical as emergencies and disasters come in short notice and may come unexpectedly. The updated form will help staff and licensees meet the requirements of the: (1) Health and Safety Code (HSC) wherein the contents provide provisions for the California Community Care Facilities; (2) the California Code of Regulations (CCR) wherein the contents provide instructions and requirements relating to the Disaster and Mass Casualty Plan.

Listed below include some of the additional requirements for community care facilities. Namely (ARF, CCH, EBSH, SRF) and RCFCIs.

- Providing training on their plans to each staff member upon hire and annually thereafter.
- Conducting drills for each shift covering various emergency situations at least once each quarter. Residents are not required to participate in drills.
- Having resident's necessary information ready in case of relocation, including contact information for resident's responsible person and physician.
- Transportation plans.
- Two potential shelter locations (one outside the immediate area).
- Location of utility shutoff valves and instructions for use.
- Backup generator plan.
- Communication plans.
- Assistance with medications and assistive medical devices

The licensee should make the plan available to residents upon request as well as their authorized representative. Licensees are also required to have an evacuation chair at each stairwell.

6BEDS PROFESSIONAL PAYING MEMBER (PPM)



How You Can Be A 6Beds Professional Paying Member

You may join us at 6Beds for as little as **\$1.67 a day** or **\$50 a month** irregardless of how many licensed homes you have. You can also opt for different payment method:

- \$50 - Monthly Payment
- \$150 - Quarterly Payment
- \$300 - Semi-Annually Payment
- \$600 - Annual Membership Payment

Professional Paying Member (PPM)

Professional Paying Members
receive exclusive to member
only benefits

6BEDS is a Mutual Benefit NON-PROFIT Corporation. Part of the membership dues is tax-deductible (consult with your tax advisor).

Membership dues are non-refundable.



6Beds

Advocating for Safe & Affordable
Quality Residential Care

MEMBERS ONLY EXCLUSIVE BENEFITS



Professional Paying Members (PPM) Benefits

- Invitation to **CaretoTalk** Member exclusive webinar for PPM (including ppt presentation and recording via member portal)
- **Lobbying** at State Capitol to help protect and expand residential care, including lobbying for rate increases and finding funding sources for ARFs and RCFEs
- **Stakeholder seats** with the Department of Social Services, Department of Developmental Services, Department of Federal and State Labor.
- Access to purchase **Wage and Hour Guide** and all updates from Littler, (Exclusive access to PPM only)
- **The Voice Quarterly Newsletter** for all current news pertaining to ARFs and RCFEs
- Access to **exclusive 6Beds training**.
- Call or Text **1-833-My6Beds (1-833-696-2337)** for questions, free for simple questions and discounted consulting fees for complex questions
- Access to **member only portal**
- **Vendor Discounts**



Our Advocacy & Goals

WHY CONTRIBUTE?

One of our missions is to provide shelter and care to a large number of low-income elderly in the state of California, with the ultimate goal of helping end homelessness. 6Beds promotes and stands by ARFs and RCFEs that are licensed by the state and is subjected to an extensive licensing process as well as ongoing check and balance from the State through unannounced inspections, unlike those of room and board who do not provide care and are unlicensed facilities. At 6Beds, we advocate for safe, affordable housing that meets the needs of Californians with disabilities by providing the best possible care.

Contribute to Support our Advocacy!

Contribute Now Button (<https://6beds.org/contribute-now/#contribute>)

Your generous contribution can make a significant difference in our advocacy and in our mission to provide shelter and care to our frail elderly and adults with disabilities, including mental illness. Contribute to help end homelessness in California.





LEGISLATIVE UPDATES

The Legislature reconvened on January 3rd for the second year of the two-year session. As anticipated, there has been a great deal of focus on the need for more housing, and 6beds members certainly provide a positive contribution to that important policy priority. We are also seeing continued focus on residents health and safety in addition to fair pay for employees and dealing with the excessive costs associated with housing. The Governor proposed a 2022-2023 budget spending \$286 billion. His proposal continued to focus on the urgent need for more housing, in addition to other important areas such as climate change, education and of course COVID. In a "short" three months since the session began COVID has begun to morph, leading us into an endemic, something we all are grateful to hear!

LEGISLATIVE UPDATES



The bills of interest and possible impact on 6beds members introduced this year among the total of more than 2400 bills include the following:

- Assembly Bill 2619, which has been introduced by Assemblyman Patterson at 6beds.Inc's request and is cosponsored by the California Commission on Aging. The bill amends the CA RCFE Act to allow RCFE's, currently serving 6 or fewer individuals to instead serve more than 6 individuals if the residence is in a residential zone and has sufficient square footage to accommodate the additional residents. The bill is likely to be heard in the Assembly Human Services Committee on April 18. Assemblyman Patterson has had personal family experience with 6beds types of facilities and is a huge believer in the value that they bring to our communities.
- Assembly Bill 1967 by Assemblyman Daly would authorize a local agency to require a conditional use permit for transitional or supportive housing with 7 or more residents. This bill could be problematic for the bill that 6beds has "sponsored", AB 2619. We will be in communication with the author to ensure that as the bill advances, it does not hinder our efforts to allow our members to increase the number of residents in their homes beyond the current cap of 6 residents.
- Assembly Bill 1720 by Assemblyman Holden would require the Department of Social Services to establish a process to grant a simplified criminal record exemption. It would also prohibit DSS (but apparently not licensees) from requiring prospective employees to disclose their prior encounters with the criminal justice system. 6beds lobbyists Bob Naylor and Roxanne Gould are in communication with the author and will continue to work with Assemblyman Holden to ensure that as the bill proceeds, it is of benefit to 6beds members while also ensuring that residents are cared for safely.

LEGISLATIVE UPDATES

- AB 2546 (Nazarian) Resident Designated Support Persons Act. Would give residents of nursing homes and RCFEs the right to designate a minimum of two relatives or other persons as support persons and require the facilities to grant access, not subject to visiting hour restrictions, to at least one of them at a time for in person visits during declared emergencies, subject to required health protocols. Would require the facilities to provide language-appropriate written infection control protocols and to supply PPE free of charge to meet the same PPE requirements as for their staff.
- Senate Bill 1093 by Senator Hurtado requires a transfer of a criminal record clearance to be submitted on a form provided by the Department of Social Services, or via a web portal. SB 1093 would permit the licensee to verify the individual's identity and removes the requirement for an individual to submit a copy of their driver's license (or other valid government identification) along with a request for transfer of a criminal record clearance. Senator Hurtado has been a champion of 6Beds.inc and we will continue to work closely with her on this measure.
- 6beds leadership has alerted your lobbyists to the insurance crisis for RCFEs and we are in communication with California Department of Insurance to identify solutions to this crisis and avoid more home closures.

LEGISLATIVE UPDATES



- We are also working with a coalition to respond to the CDC extending the time required between hires and employees receiving the COVID dose (up to 8 weeks) in order to reduce the risk of myocarditis. We believe that the new guidance will make it much more difficult to bring employees on board in a timely manner. We are proposing that allowing for individuals to be hired and work after their first COVID dose, with masking and testing and screening in place until the second dose, is the most practical solution and would avoid possible staffing shortfalls.

Community Care Expansion

The 2021-22 state budget appropriated \$570 million for the Community Care Expansion program. The program is providing grants for acquisition, construction and rehabilitation of community care facilities, including RCFEs and ARFs, with a focus on those facilities that are serving or could serve SSI recipients including those who are experiencing or at risk of homelessness. A request for applications was issued on January 6, and applications for grants are being reviewed. Information on this program is available at infrastructure.buildingcalhhs.com.

This funding is a result of concern we and others expressed about the number of RCFEs that have closed in recent years, the difficulty of serving those with only SSI grants, and the promising role these facilities can play in assisting seniors and mentally ill individuals at risk of homelessness. If this program is deemed a success, there may well be additional funding from a growing budget surplus.

LEGISLATIVE UPDATES



Delayed Bill We Support

AB 499 (Blanca Rubio)—referral source for RCFEs: duties

This bill to regulate referral agencies, nearly enacted last year, was put over to this year at the request of Attorney General Bonta's office, which seems to be interested in strengthening regulation. The bill is sponsored by A Place for Mom, and we worked over two years with committee staff to improve the bill—the latest amendment requires a referral agency to cease contacting or making referrals to a person within 10 days of a request to cease such activity. We agreed to support the bill with that amendment. The bill is still pending, and we are monitoring it for a possible hearing date

PINs Update

Provider Information Notices (PINs) Updates for Adult and Senior Care (ASC) Program

NOTE: Prior to November 2016, CCLD information currently being communicated in PIN form was communicated in the form of Provider Letters and CCLD Information Releases. To receive email notifications when a PIN has been released please email ccldpolicynotification@dss.ca.gov

PIN 22-01-ASC - Update Regarding the Emergency and Disaster Plan Form (LIC 610D) for Adult Community Care Facilities

- All Adult Care Facilities must review their Emergency and Disaster Plan annually and make updates as necessary. This includes changes in floor plans and population served.
- Changes made after must be signed and dated by licensee or administrator to indicate plan has been reviewed and updated.

PIN 22-02-ASC - Informational Call Regarding Infection Prevention: Upcoming COVID-19 Requirements And Guidance

- Findings show an early exposure to virus, a negative lateral flow is by no means a guarantee that you are virus free.
- ASC must adopt a boosted-and-tested protocol for indoor visitors.

PIN 22-05.1-ASC - (Supersedes PIN 22-05-ASC) Adult and Senior Care Facility Worker Coronavirus Disease 2019 (COVID-19) Vaccination And Booster Requirements

- Vaccines are to remain as the most critical aspect in moving communities out of the pandemic. They are critical for building a foundation of individual and herd immunity.
- CDSS will continue to reassess COVID-19 vaccine requirements and recommendations as more information and knowledge come about from immunity studies as well as new variants.

PIN 22-06-ASC - Coronavirus Disease 2019 (COVID-19) Vaccine Additional And Booster Doses

- CDC now recommends a preference for the mRNA COVID-19 vaccines. (Pfizer-BioNTech or Moderna) over the Janssen (Johnson & Johnson) COVID-19 vaccine.
- People who were fully vaccinated outside the United States are only eligible for the Pfizer-BioNTech COVID-19 vaccine as a booster dose.

Source : cdss.ca.gov

PINs Update

PIN 22-07-ASC - (Supersedes PIN 22-04-ASC and PIN 21-40-ASC) Updated Statewide Visitation Waiver, And Testing And Vaccination Verification Guidance For Visitors Related To Coronavirus Disease 2019(COVID-19)

- General Visitation Requirements allow visitors and residents to have close contact and assist with daily activities as long as both practice hand hygiene before and after, and wear a well fitting mask.
- Visitors may choose to use an antigen or PCR test to satisfy test requirements.

PIN 22-08-ASC - Informational Call Regarding Coronavirus Disease 2019 (COVID-19) Infection Prevention: New And Current COVID-19 Guidance And Updates

- Deadline to receive a booster has been extended to March 1, 2022. This applies to all ASC staff who render services indoors.
- Recent surge in COVID-19 infections, observed from December 2021 and January 2022 show infections are decreasing but hospitalization remains high. To combat Omicron variant spread, the Federal Government is offering free at-home COVID-19 tests and N95 masks.

PIN 22-09-ASC - Updated Guidance On Quarantine And Isolation For Facility Staff Exposed To COVID-19 And Return To Work For Facility Staff Who Test Positive For Coronavirus Disease 2019 (COVID-19)

- This PIN updates quarantine and isolation guidance for ASC based on staff vaccination status. Please refer to CDC's updated risk assessment framework in this PIN to assess requirements when Facility Staff is exposed to COVID-19.
- Facility staff whose most recent test is positive and are working before meeting routine return-to-work criteria must maintain separation from other staff as much as possible (for example, use a separate break room and restroom).

PIN 22-10-ASC - Use Of At-Home, Over-The-Counter (OTC) Coronavirus Disease 2019 (COVID-19) Antigen Testing Kits

- This pin advises Adult and Senior Care (ASC) facilities on the use of over-the-counter (OTC) COVID-19 antigen testing kits. This also reminds licensees about the free Clinical Laboratory Improvement Amendments of 1988 (CLIA) waiver and free antigen tests available through the California Department of Public Health (CDPH) Antigen Testing Program.
- To be valid for ASC licensees, OTC COVID-19 antigen testing must be FDA-approved for home use. This FDA website has a continually updated list of OTC COVID-19 antigen tests that have been approved by the FDA

PIN 22-12-ASC - (Supersedes PIN 21-39.1-ASC) Governor's Executive Order N-04-22 Regarding Coronavirus Disease 2019 (COVID-19) And The Expiration Of COVID-19 Waivers

- Facility operators who are currently operating under existing California Department of Social Services (CDSS) COVID-19 waivers are permitted to continue operating under such waivers until the expiration date set forth by CDSS or until June 30, 2022, whichever occurs first (unless extended by the Governor).
- All licensing requirements associated with a waiver will be reinstated once the waivers expire or are revoked by CDSS. Consequently, the ASC Program will actively work with licensees until June 30, 2022

Source : cdss.ca.gov

COMMUNITY CARE FACILITIES (CCF) SERVING INDIVIDUALS WITH DD RATE STUDY IMPLEMENTATION



AB 136 RATE ADJUSTMENT TIMELINE- Rate Adjustment Implementation Timeline

April 1, 2022

25 percent of difference between March 31, 2022 rate model

July 1, 2023

50 percent of difference between March 31, 2022 rate and applicable rate model

July 1, 2025

Full Implementation of rate models with two payment components

- Base rate-equaling 90 percent of the rate model
- Quality incentive program component of up to 10 percent of the rate model

Rate Adjustments Phase 1 effective April 1, 2022.

DDS has been working with regional centers to gather info to make the rate changes. The most recent increase was 8.2 % to all providers.

DDS is currently working on each provider's current rate and figuring out what 25% of the difference is between that current rate and what the rate model rates should be. For instance, the provider who has a lower rate right now would get a larger dollar amount to help narrow the gap of the rate study. In that way, each regional center would have providers who offer the same service and at the same time have the same rate.

ADJUSTMENTS EXAMPLE



10

CALIFORNIA DEPARTMENT OF DEVELOPMENTAL SERVICES

Assuming that the rate model is listed at \$10,000. For the first column you will see a rate of \$8,000 dated on March 31, 2022. The difference between the rate model (\$10,000) and the rate (\$8,000) is \$2,000. You will then get the 25% of \$2,000 which is \$500. On the Next column dated April 1, 2022 you will then carry over the (25% of \$2,000) at \$500 and add it to the rate of April which is at \$8,000 totalling to \$8,500. Moving to the third column dated on July 1, 2023 would be double of the previous percentage. So 50% of the difference would be \$1,000 totalling to \$9,000 dollars with the 50% of difference. Moving to July 1, 2025 with \$9,000 as the rate model base which then gets to be 90% of the full rate. Then the \$1,000 dollars at the very top of July 2025, would be the quality incentive payment.

Process for Determining Benchmark Rates for Community Care Facility Providers:

- Collect data (staffing ratio, staff qualifications, service hours) to align with the rate models.
- Regional Centers received a service detail collection form for each provider;
- Regional Centers worked with their providers as needed to complete the forms

No changes to billing/authorizations required in April 2022

- If a provider has hourly or daily rates, regional centers can continue to use those units
- In coming years work with stakeholders to standardize through shared definitions of service, staffing qualifications & billing units.

Current rates will be compared to benchmark rate models to calculate the applicable rate

- Information provided will identify baseline rate to be compared to benchmark rate and calculate the applicable rate adjustment.

Note:

- No changes in service code or program design
- No changes to billing units (hours, days, etc.)
- No rates will be reduced (There are some providers with rates that already exceed the rate study suggested rate, those will not be reduced until the law says that they will not be reduced until July of 2026.

Click here ([link to dds resources](#)) To know more about the Rate Study Implementation

Fill My Bed

FILL MY BED:



6Beds

Advocating for Safe & Affordable
Quality Residential Care

"Find the perfect place for your loved ones"

Details:

Location :

Room Type: Private or Shared room

Basic rate:

Contact Person:

Your
Logo
here:

As our Professional Paying Member (PPM), you are eligible to be a part of our on going "Fill My Bed" project for our PPMs.

http://



www.6beds.org



<https://facebook.com/6Beds>



[@6Beds_Inc](https://twitter.com/6Beds_Inc)



6Beds

Advocating for Safe & Affordable
Quality Residential Care

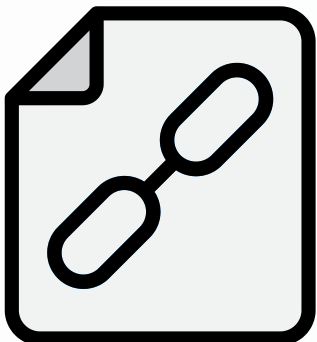
FOLLOW US ON SOCIAL MEDIA



6Beds.Org



@6Beds_Inc



www.6beds.org

Life Hospice



Life Hospice

Service and/or product: Life Hospice, Inc. provides services to terminally ill patients with a wide range of diagnoses.

For more information:

Arpine Melikyan
arpi@lifehospiceinc.com, LifeHospice@yahoo.com
5101 E La Palma Ave #100-P
Anaheim Hills, CA 92807
Phone: (714) 464-2018
(714) 333-4447 (fax)

Achieve Health Management LLC



Service and/or product: Remote Physiological Monitoring / Case Management

For more information:

Harvey Bogarat, VP PAC Services
hbogarat@achievehealthmanagement.com
2211 Encinitas Boulevard, Suite 200, Encinitas, California 92024
Phone: (203) 470-1073
Link to: [Achieve Health Management LLC](#)

Alzheimer's Orange County

Service and/or product: Provides support to Orange County families and individuals through brain health and dementia education, care consultations, community resource connections, Adult Day Health Services, residential, memory care services

For more information:

Jim McAleer, President/CEO
jim.mcaleer@alzoc.org
2515 McCabe Way, Suite 200, Irvine, California 92614
Phone: (949) 757-3715
Link to: [Alzheimer's Orange County](#)

ARFDD



Service and/or product: Development, Program Design and Licensing Assistance for ARF and RCFE serving individuals with Developmental Disabilities

For more information:

Vincent Amayun, President
vincent@arfdd.com
4022 Sunrise Blvd, Suite 120-388, Rancho Cordova CA
Phone: (855) 692-7333
Link to: [ARFDD](#)

6 BEDS VENDORS



Clear Choice Senior Services

Service and/or product: Providing education, guidance, and price negotiation. We are a local company with local advisors who know the facilities available within driving distance of our location. We will walk you through the process, from that first phone call to placement with the ideal senior living arrangement.

For more information:

Clear Choice Senior Services

Linda Armas

linda4seniors@yahoo.com

Link to : [Clear Choice Senior Services](#)



Gould, Hahn, & Reinhardt

Service and/or product: Legal services for RCF operators with DSS compliance and Employment

For more information:

Robert Hahn, Managing Partner

law@gouldhahn.com

2550 Ninth Street #101, Berkeley, California 94710 United States

Phone: (510) 697-2229

Link to: [Gould & Hahn](#)



Libertana

Service and/or product: Assisted Living Waiver Care Coordination Agency

For more information:

Jonathan Istrin, Executive Director

jistrin@libertana.com

5805 Sepulveda Blvd. Suite 605, Sherman Oaks, California 91411

Phone: (818) 902-4112

Link to: [Libertana](#)

Mae Villanueva Mediation

Service and/or product: Wage and hour mediation and conciliation for workplace conflict.

For more information:

Mae Villanueva, Mediator
mae@maevillanueva.com
6701 Koll Center Parkway, Suite 250 Pleasanton, CA 94566
Phone:
(925) 336-5272
Link to: [Mae Villanueva](#)

Personal Care and Assisted Living Insurance Center, LLC

Service and/or product: Insurance Protection

For more information:

Brian Barrick, CEO
brian@pcalic.com
195 Stock Street, Suite 118, Hanover, Pennsylvania 17331
Phone: (800) 673-2558
Link to: [Personal Care and Assisted Living Insurance Center, LLC](#)

S3C Energy Inc.

Service and/or product: Solar

For more information:

Alex Alino, President
aalino@s3csolar.com
20803 Valley Blvd. Walnut, California 91789
Phone: (714) 600-4915

Salus Home Care

Service and/or product: Homecare, Home Health, Hospice, & Palliative Care

For more information:

Boad Swanson, President
bswanson@salushomecare.com
630 Roosevelt, Irvine, California 92620
Phone: (949) 338-0800
Link to: [Salus Homecare](#)



Senior Community Learning

Service and/or product: Administrator CEUs/Staff Training

For more information:

Mickey Gray, CEO

mgray@seniorcommunitylearning.com

6965 Ammonite Place Carlsbad, California 92009

Phone: (760) 580-2208

Link to: [Senior Community Learning](#)



Sherman & Roylance

Service and/or product: Your source for Senior Housing Investments. Conducts exclusive private sales, find and qualify prospective buyers, and prepare and distribute confidential offering memorandums.

For more information:

Jeff Hauser, Director of Operations

jhauser@SRSeniorLiving.com

Phone: (949) 836 – 7282

Link to: [Sherman & Roylance](#)



Sierra Professional Insurance Services

Service and/or product: RCFE Insurance

For more information:

Amy McNamara, General Manager

amy@sierraprofessional.com

333 Village Blvd, Incline Village, Nevada 89451

Phone: (619) 252-4889

Link to: [Sierra Professional Insurance Services](#)



Summa Insurance Service

Service and/or product: Insurance

For more information:

Marge Aguilar, Office Manager

maguilar@summainures.com

335 N Puente St Ste A, Brea California 92821 United States

Phone:

(714) 774-3778

(714) 774-3768

Link to: [Summa Insurance Service](#)



QUOTE of the QUARTER

“THE CLOSEST THING
TO BEING CARED FOR IS
TO CARE FOR SOMEONE
ELSE.”

– CARSON MCCULLERS